



Aseptic unions  
Hygienic unions





The aseptic and hygienic connections are compatible and differ in the axial length, the available materials and the assortment (the blind parts are only available as DIN 11853 version). The connections are delivered as a standard with pipe dimensions acc.to DIN 11866 series A.B and C.

### DIN 11864 Part 1-3

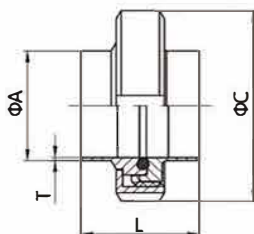
- Fittings made of stainless steel for the aseptic , chemical and pharmaceutical industry
- ASeptic connections, standard type
- DIN11864-1: Aseptic - Union
- DIN11864-2: Aseptic - Flange connection
- DIN11864-3: Aseptic - Clamp connection

The gasket groove is manufactured to form A standard

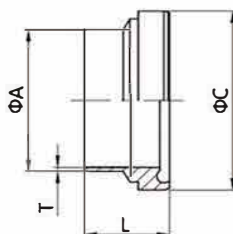
### DIN 11853 Part 1-3

- Fittings made of stainless steel for food and chemical
- Hygienic connections, short type
- DIN11864-1: Hygienic - Union
- DIN11864-2: Hygienic - Flange connection
- DIN11864-3: Hygienic - Clamp connection Manufactured with groove for O-Rine

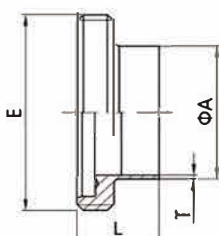



**Unions DIN**
**DIN11853-V-A / DIN11864-V-A**


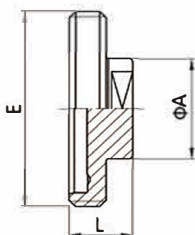
| Size | A   | C   | L  | L (Long) | T   |
|------|-----|-----|----|----------|-----|
| 10   | 13  | 38  | 32 | 76       | 1.5 |
| 15   | 19  | 44  | 32 | 76       | 1.5 |
| 20   | 23  | 54  | 34 | 76       | 1.5 |
| 25   | 29  | 63  | 42 | 77       | 1.5 |
| 32   | 35  | 70  | 48 | 88       | 1.5 |
| 40   | 41  | 78  | 50 | 88       | 1.5 |
| 50   | 53  | 92  | 54 | 89       | 1.5 |
| 65   | 70  | 112 | 62 | 113      | 2.0 |
| 80   | 85  | 127 | 72 | 117      | 2.0 |
| 100  | 104 | 148 | 86 | 120      | 2.0 |

**Liner DIN (Short)**
**DIN11853-BS-1A / DIN11864-BS-1A**


| Size | A   | C     | L  | L (Long) | T   |
|------|-----|-------|----|----------|-----|
| 10   | 13  | 21.9  | 17 | 39       | 1.5 |
| 15   | 19  | 27.9  | 17 | 39       | 1.5 |
| 20   | 23  | 35.9  | 18 | 38       | 1.5 |
| 25   | 29  | 42.9  | 22 | 40       | 1.5 |
| 32   | 35  | 48.9  | 25 | 47       | 1.5 |
| 40   | 41  | 54.9  | 26 | 47       | 1.5 |
| 50   | 53  | 66.9  | 30 | 48       | 1.5 |
| 65   | 70  | 84.9  | 34 | 61       | 2.0 |
| 80   | 85  | 98.9  | 38 | 61       | 2.0 |
| 100  | 104 | 118.9 | 46 | 66       | 2.0 |

**Male DIN (Short)**
**DIN11853-GS-1A / DIN11864-GS-1A**


| Size | A   | T   | L  | E          | L (Long) |
|------|-----|-----|----|------------|----------|
| 10   | 13  | 1.5 | 19 | Rd28×1/8"  | 41       |
| 15   | 19  | 1.5 | 19 | Rd34×1/8"  | 41       |
| 20   | 23  | 1.5 | 21 | Rd44×1/6"  | 43       |
| 25   | 29  | 1.5 | 26 | Rd52×1/6"  | 43       |
| 32   | 35  | 1.5 | 30 | Rd58×1/6"  | 48       |
| 40   | 41  | 1.5 | 31 | Rd65×1/6"  | 48       |
| 50   | 53  | 1.5 | 31 | Rd78×1/6"  | 48       |
| 65   | 70  | 2.0 | 36 | Rd95×1/6"  | 60       |
| 80   | 85  | 2.0 | 42 | Rd110×1/4" | 64       |
| 100  | 104 | 2.0 | 50 | Rd130×1/4" | 64       |

**Blank Male DIN**
**DIN11853-BGS-1A / DIN11864-BGS-1A**


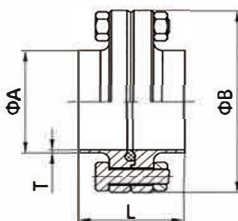
| Size | A  | E          | L  |
|------|----|------------|----|
| 10   | 22 | Rd28×1/8"  | 24 |
| 15   | 22 | Rd34×1/8"  | 24 |
| 20   | 22 | Rd44×1/6"  | 24 |
| 25   | 40 | Rd52×1/6"  | 24 |
| 32   | 40 | Rd58×1/6"  | 24 |
| 40   | 40 | Rd65×1/6"  | 24 |
| 50   | 40 | Rd78×1/6"  | 24 |
| 65   | 48 | Rd95×1/6"  | 28 |
| 80   | 48 | Rd110×1/4" | 28 |
| 100  | 48 | Rd130×1/4" | 30 |





### Flange Connection DIN

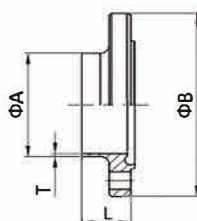
### DIN11853-F-A / DIN11864-F-A



| Size | A   | B   | L  | L (Long) | T   |
|------|-----|-----|----|----------|-----|
| 10   | 13  | 54  | 48 | 80       | 1.5 |
| 15   | 19  | 59  | 48 | 80       | 1.5 |
| 20   | 23  | 64  | 48 | 80       | 1.5 |
| 25   | 29  | 70  | 48 | 80       | 1.5 |
| 32   | 35  | 76  | 48 | 90       | 1.5 |
| 40   | 41  | 82  | 48 | 90       | 1.5 |
| 50   | 53  | 94  | 48 | 90       | 1.5 |
| 65   | 70  | 113 | 48 | 108      | 2.0 |
| 80   | 85  | 133 | 52 | 116      | 2.0 |
| 100  | 104 | 159 | 52 | 116      | 2.0 |
| 125  | 129 | 183 | 56 | 120      | 2.0 |
| 150  | 154 | 213 | 56 | 120      | 2.0 |

### Nut Flange DIN

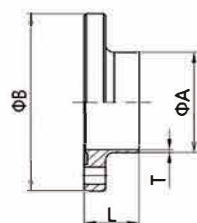
### DIN11853-NF-2A / DIN11864-NF-2A



| Size | A   | B   | L    | L (Long) | T   |
|------|-----|-----|------|----------|-----|
| 10   | 13  | 54  | 25.5 | 41.5     | 1.5 |
| 15   | 19  | 59  | 25.5 | 41.5     | 1.5 |
| 20   | 23  | 64  | 25.5 | 41.5     | 1.5 |
| 25   | 29  | 70  | 25.5 | 41.5     | 1.5 |
| 32   | 35  | 76  | 25.5 | 46.5     | 1.5 |
| 40   | 41  | 82  | 25.5 | 46.5     | 1.5 |
| 50   | 53  | 94  | 25.5 | 46.5     | 1.5 |
| 65   | 70  | 113 | 25.5 | 55.5     | 2.0 |
| 80   | 85  | 133 | 27.5 | 59.5     | 2.0 |
| 100  | 104 | 159 | 27.5 | 59.5     | 2.0 |
| 125  | 129 | 183 | 29.5 | 61.5     | 2.0 |
| 150  | 154 | 213 | 29.5 | 61.5     | 2.0 |

### Liner Flange DIN

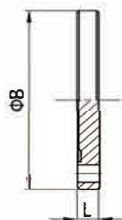
### DIN11853-BF-2A / DIN11864-BF-2A



| Size | A   | B   | L  | L (Long) | T   |
|------|-----|-----|----|----------|-----|
| 10   | 13  | 54  | 24 | 40       | 1.5 |
| 15   | 19  | 59  | 24 | 40       | 1.5 |
| 20   | 23  | 64  | 24 | 40       | 1.5 |
| 25   | 29  | 70  | 24 | 40       | 1.5 |
| 32   | 35  | 76  | 24 | 45       | 1.5 |
| 40   | 41  | 82  | 24 | 45       | 1.5 |
| 50   | 53  | 94  | 24 | 45       | 1.5 |
| 65   | 70  | 113 | 24 | 54       | 2.0 |
| 80   | 85  | 133 | 26 | 58       | 2.0 |
| 100  | 104 | 159 | 26 | 58       | 2.0 |
| 125  | 129 | 183 | 28 | 60       | 2.0 |
| 150  | 154 | 213 | 28 | 60       | 2.0 |

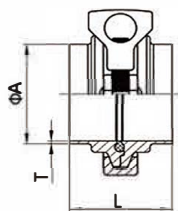
### Blank Liner Flange DIN

### DIN11853-BBF-2A / DIN11864-BBF-2A

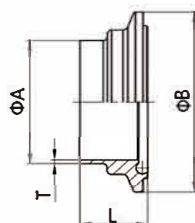


| Size | A   | L  |
|------|-----|----|
| 10   | 54  | 10 |
| 15   | 59  | 10 |
| 20   | 64  | 10 |
| 25   | 70  | 10 |
| 32   | 76  | 10 |
| 40   | 82  | 10 |
| 50   | 94  | 10 |
| 65   | 113 | 10 |
| 80   | 133 | 12 |
| 100  | 159 | 14 |
| 125  | 183 | 14 |
| 150  | 213 | 16 |

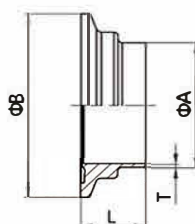



**Clamp Connection DIN**
**DIN11853-K-A / DIN11864-K-A**


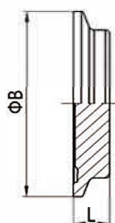
| Size | A   | L  | L (Long) | T   |
|------|-----|----|----------|-----|
| 10   | 13  | 44 | 76       | 1.5 |
| 15   | 19  | 44 | 76       | 1.5 |
| 20   | 23  | 44 | 76       | 1.5 |
| 25   | 29  | 44 | 77       | 1.5 |
| 32   | 35  | 48 | 88       | 1.5 |
| 40   | 41  | 48 | 88       | 1.5 |
| 50   | 53  | 49 | 89       | 1.5 |
| 65   | 70  | 53 | 113      | 2.0 |
| 80   | 85  | 57 | 117      | 2.0 |
| 100  | 104 | 60 | 120      | 2.0 |

**Clamp Nut DIN**
**DIN11853-NKS-3A / DIN11864-NKS-3A**


| Size | A   | B     | L    | L (Long) | T   |
|------|-----|-------|------|----------|-----|
| 10   | 13  | 34.0  | 23.5 | 39.5     | 1.5 |
| 15   | 19  | 34.0  | 23.5 | 39.5     | 1.5 |
| 20   | 23  | 50.5  | 23.5 | 39.5     | 1.5 |
| 25   | 29  | 50.5  | 23.5 | 40.0     | 1.5 |
| 32   | 35  | 50.5  | 25.5 | 45.5     | 1.5 |
| 40   | 41  | 64.0  | 25.5 | 45.5     | 1.5 |
| 50   | 53  | 77.5  | 26.0 | 46.0     | 1.5 |
| 65   | 70  | 91.0  | 28.0 | 58.0     | 2.0 |
| 80   | 85  | 106.0 | 30.0 | 60.0     | 2.0 |
| 100  | 104 | 130.0 | 31.5 | 61.5     | 2.0 |

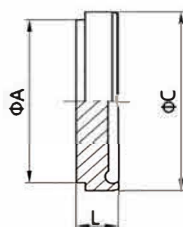
**Clamp Liner DIN**
**DIN11853-BKS-3A / DIN11864-BKS-3A**


| Size | A   | B     | L    | L (Long) | T   |
|------|-----|-------|------|----------|-----|
| 10   | 13  | 34.0  | 22.0 | 38.0     | 1.5 |
| 15   | 19  | 34.0  | 22.0 | 38.0     | 1.5 |
| 20   | 23  | 50.5  | 22.0 | 38.0     | 1.5 |
| 25   | 29  | 50.5  | 22.5 | 38.5     | 1.5 |
| 32   | 35  | 50.5  | 24.0 | 44.0     | 1.5 |
| 40   | 41  | 64.0  | 24.0 | 44.0     | 1.5 |
| 50   | 53  | 77.5  | 24.5 | 44.5     | 1.5 |
| 65   | 70  | 91.0  | 26.5 | 56.5     | 2.0 |
| 80   | 85  | 106.0 | 28.5 | 58.5     | 2.0 |
| 100  | 104 | 130.0 | 30.0 | 60.0     | 2.0 |

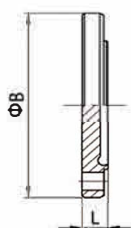
**Blank Liner Clamp DIN**
**DIN11853-BBKS-3A / DIN11864-BBKS-3A**


| Size | B     | L    |
|------|-------|------|
| 10   | 34.0  | 11.5 |
| 15   | 34.0  | 11.5 |
| 20   | 50.5  | 11.5 |
| 25   | 50.5  | 11.5 |
| 32   | 50.5  | 11.5 |
| 40   | 64.0  | 11.5 |
| 50   | 77.5  | 13.5 |
| 65   | 91.0  | 13.5 |
| 80   | 106.0 | 13.5 |
| 100  | 130.0 | 13.5 |

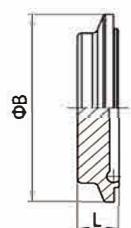



**Blank liner DIN**
**DIN11853-BBS-1A / DIN11864-BBS-1A**


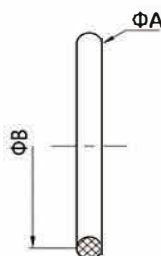
| Size | A   | C     | L  |
|------|-----|-------|----|
| 10   | 18  | 21.9  | 9  |
| 15   | 24  | 27.9  | 9  |
| 20   | 30  | 35.9  | 10 |
| 25   | 35  | 42.9  | 12 |
| 32   | 41  | 48.9  | 13 |
| 40   | 48  | 54.9  | 13 |
| 50   | 61  | 66.9  | 14 |
| 65   | 79  | 84.9  | 16 |
| 80   | 93  | 98.9  | 16 |
| 100  | 114 | 118.9 | 20 |

**Blank Nut Flange DIN**
**DIN11853-BNF-2A / DIN11864-BNF-2A**


| Size | B   | L    |
|------|-----|------|
| 10   | 54  | 11.5 |
| 15   | 59  | 11.5 |
| 20   | 64  | 11.5 |
| 25   | 70  | 11.5 |
| 32   | 76  | 11.5 |
| 40   | 82  | 11.5 |
| 50   | 94  | 11.5 |
| 65   | 113 | 11.5 |
| 80   | 133 | 13.5 |
| 100  | 159 | 15.5 |
| 125  | 183 | 15.5 |
| 150  | 213 | 17.5 |

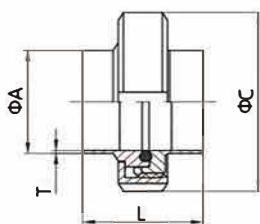
**Blank Nut Clamp DIN**
**DIN11853-BNKS-3A / DIN11864-BNKS-3A**


| Size | B     | L  |
|------|-------|----|
| 10   | 34.0  | 13 |
| 15   | 34.0  | 13 |
| 20   | 50.5  | 13 |
| 25   | 50.5  | 13 |
| 32   | 50.5  | 13 |
| 40   | 64.0  | 13 |
| 50   | 77.5  | 15 |
| 65   | 91.0  | 15 |
| 80   | 106.0 | 15 |
| 100  | 130.0 | 15 |

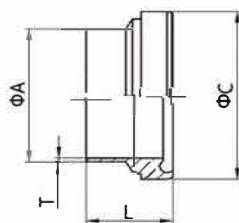
**O-Ring**
**DIN11853-R-A / DIN11864-R-A**


| Size | A   | L   |
|------|-----|-----|
| 10   | 12  | 3.5 |
| 15   | 18  | 5.0 |
| 20   | 22  | 5.0 |
| 25   | 28  | 5.0 |
| 32   | 34  | 3.5 |
| 40   | 40  | 3.5 |
| 50   | 52  | 3.5 |
| 65   | 68  | 5.0 |
| 80   | 83  | 5.0 |
| 100  | 102 | 5.0 |
| 125  | 127 | 5.0 |
| 150  | 152 | 5.0 |

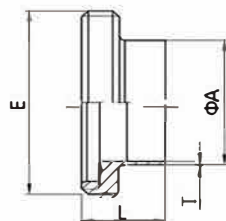



**Unions ISO**
**DIN11853-V-B / DIN11864-V-B**


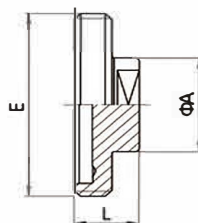
| Size | A    | C   | L  | L (Long) | T   |
|------|------|-----|----|----------|-----|
| 13.5 | 13.5 | 38  | 32 | 76       | 1.6 |
| 17.2 | 17.2 | 44  | 32 | 76       | 1.6 |
| 21.3 | 21.3 | 54  | 34 | 78       | 1.6 |
| 26.9 | 26.9 | 63  | 42 | 78       | 1.6 |
| 33.7 | 33.7 | 70  | 48 | 88       | 2.0 |
| 42.4 | 42.4 | 78  | 50 | 88       | 2.0 |
| 48.3 | 48.3 | 92  | 54 | 90       | 2.0 |
| 60.3 | 60.3 | 112 | 62 | 114      | 2.0 |
| 76.1 | 76.1 | 127 | 72 | 117      | 2.0 |
| 88.9 | 88.9 | 148 | 86 | 122      | 2.3 |

**Liner ISO**
**DIN11853-BS-1B / DIN11864-BS-1B**


| Size | A    | C     | L  | L (Long) | T   |
|------|------|-------|----|----------|-----|
| 13.5 | 13.5 | 21.9  | 17 | 39       | 1.6 |
| 17.2 | 17.2 | 27.9  | 17 | 39       | 1.6 |
| 21.3 | 21.3 | 35.9  | 18 | 40       | 1.6 |
| 26.9 | 26.9 | 42.9  | 22 | 41       | 1.6 |
| 33.7 | 33.7 | 48.9  | 25 | 47       | 2.0 |
| 42.4 | 42.4 | 54.9  | 26 | 47       | 2.0 |
| 48.3 | 48.3 | 66.9  | 30 | 48       | 2.0 |
| 60.3 | 60.3 | 84.9  | 34 | 62       | 2.0 |
| 76.1 | 76.1 | 98.9  | 38 | 61       | 2.0 |
| 88.9 | 88.9 | 118.9 | 46 | 68       | 2.3 |

**Male ISO**
**DIN11853-GS-1B / DIN11864-GS-1B**


| Size | A    | T   | L  | E          | L (Long) |
|------|------|-----|----|------------|----------|
| 13.5 | 13.5 | 1.6 | 19 | Rd28×1/8"  | 41       |
| 17.2 | 17.2 | 1.6 | 19 | Rd34×1/8"  | 41       |
| 21.3 | 21.3 | 1.6 | 21 | Rd44×1/6"  | 43       |
| 26.9 | 26.9 | 1.6 | 26 | Rd52×1/6"  | 43       |
| 33.7 | 33.7 | 2.0 | 30 | Rd58×1/6"  | 48       |
| 42.4 | 42.4 | 2.0 | 31 | Rd65×1/6"  | 48       |
| 48.3 | 48.3 | 2.0 | 31 | Rd78×1/6"  | 49       |
| 60.3 | 60.3 | 2.0 | 36 | Rd95×1/6"  | 60       |
| 76.1 | 76.1 | 2.0 | 42 | Rd110×1/4" | 64       |
| 88.9 | 88.9 | 2.3 | 50 | Rd130×1/4" | 64       |

**Blank Male ISO**
**DIN11853-BGS-1B / DIN11864-BGS-1B**


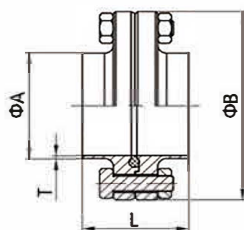
| Size | A  | E          | L  |
|------|----|------------|----|
| 13.5 | 22 | Rd28×1/8"  | 24 |
| 17.2 | 22 | Rd34×1/8"  | 24 |
| 21.3 | 22 | Rd44×1/6"  | 24 |
| 26.9 | 40 | Rd52×1/6"  | 24 |
| 33.7 | 40 | Rd58×1/6"  | 24 |
| 42.4 | 40 | Rd65×1/6"  | 2  |
| 48.3 | 40 | Rd78×1/6"  | 24 |
| 60.3 | 48 | Rd95×1/6"  | 28 |
| 76.1 | 48 | Rd110×1/4" | 28 |
| 88.9 | 48 | Rd130×1/4" | 30 |





### Flange Connection ISO

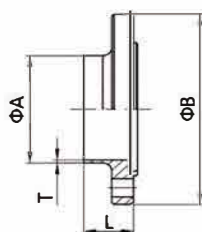
### DIN11853-F-B / DIN11864-F-B



| Size  | A     | B   | L  | L (Long) | T   |
|-------|-------|-----|----|----------|-----|
| 13.5  | 13.5  | 54  | 48 | 80       | 1.6 |
| 17.2  | 17.2  | 59  | 48 | 80       | 1.6 |
| 21.3  | 21.3  | 62  | 48 | 80       | 1.6 |
| 26.9  | 26.9  | 69  | 48 | 80       | 1.6 |
| 33.7  | 33.7  | 74  | 48 | 90       | 2.0 |
| 42.4  | 42.4  | 82  | 48 | 90       | 2.0 |
| 48.3  | 48.3  | 88  | 48 | 90       | 2.0 |
| 60.3  | 60.3  | 103 | 48 | 108      | 2.0 |
| 76.1  | 76.1  | 125 | 48 | 112      | 2.0 |
| 88.9  | 88.9  | 137 | 52 | 116      | 2.3 |
| 114.3 | 114.3 | 168 | 52 | 116      | 2.3 |

### Nut Flange ISO

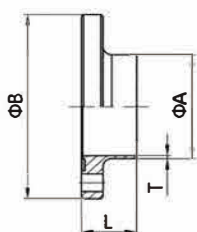
### DIN11853-NF-2B / DIN11864-NF-2B



| Size  | A     | B   | L    | L (Long) | T   |
|-------|-------|-----|------|----------|-----|
| 13.5  | 13.5  | 54  | 25.5 | 41.5     | 1.6 |
| 17.2  | 17.2  | 59  | 25.5 | 41.5     | 1.6 |
| 21.3  | 21.3  | 62  | 25.5 | 41.5     | 1.6 |
| 26.9  | 26.9  | 69  | 25.5 | 41.5     | 1.6 |
| 33.7  | 33.7  | 74  | 25.5 | 46.5     | 2.0 |
| 42.4  | 42.4  | 82  | 25.5 | 46.5     | 2.0 |
| 48.3  | 48.3  | 88  | 25.5 | 46.5     | 2.0 |
| 60.3  | 60.3  | 103 | 25.5 | 55.5     | 2.0 |
| 76.1  | 76.1  | 125 | 25.5 | 57.5     | 2.0 |
| 88.9  | 88.9  | 137 | 27.5 | 59.5     | 2.3 |
| 114.3 | 114.3 | 168 | 27.5 | 59.5     | 2.3 |

### Liner Flange ISO

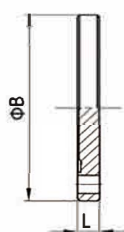
### DIN11853-BF-2B / DIN11864-BF-2B



| Size  | A     | B   | L  | L (Long) | T   |
|-------|-------|-----|----|----------|-----|
| 13.5  | 13.5  | 54  | 24 | 40       | 1.6 |
| 17.2  | 17.2  | 59  | 24 | 40       | 1.6 |
| 21.3  | 21.3  | 62  | 24 | 40       | 1.6 |
| 26.9  | 26.9  | 69  | 24 | 40       | 1.6 |
| 33.7  | 33.7  | 74  | 24 | 45       | 2.0 |
| 42.4  | 42.4  | 82  | 24 | 45       | 2.0 |
| 48.3  | 48.3  | 88  | 24 | 45       | 2.0 |
| 60.3  | 60.3  | 103 | 24 | 54       | 2.0 |
| 76.1  | 76.1  | 125 | 24 | 56       | 2.0 |
| 88.9  | 88.9  | 137 | 26 | 58       | 2.3 |
| 114.3 | 114.3 | 168 | 26 | 58       | 2.3 |

### Blank Liner Flange ISO

### DIN11853-BBF-2B / DIN11864-BBF-2B



| Size  | A   | L   |
|-------|-----|-----|
| 13.5  | 54  | 10  |
| 17.2  | 59  | 10  |
| 21.3  | 62  | 10  |
| 26.9  | 69  | 10  |
| 33.7  | 74  | 10  |
| 42.4  | 82  | 10  |
| 48.3  | 88  | 10  |
| 60.3  | 103 | 10  |
| 76.1  | 125 | 12  |
| 88.9  | 137 | 12  |
| 114.3 | 168 | 14v |

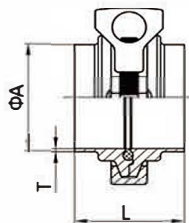






### Clamp Connection ISO

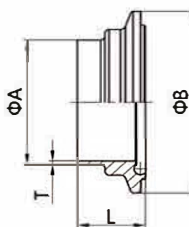
### DIN11853-K-B / DIN11864-K-B



| Size | A    | L  | L (Long) | T   |
|------|------|----|----------|-----|
| 13.5 | 13.5 | 44 | 76       | 1.6 |
| 17.2 | 17.2 | 44 | 76       | 1.6 |
| 21.3 | 21.3 | 44 | 78       | 1.6 |
| 26.9 | 26.9 | 44 | 78       | 1.6 |
| 33.7 | 33.7 | 48 | 88       | 2.0 |
| 42.4 | 42.4 | 48 | 88       | 2.0 |
| 48.3 | 48.3 | 50 | 90       | 2.0 |
| 60.3 | 60.3 | 54 | 114      | 2.0 |
| 76.1 | 76.1 | 57 | 117      | 2.0 |
| 88.9 | 88.9 | 62 | 122      | 2.3 |

### Clamp Nut ISO

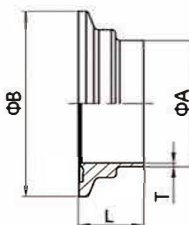
### DIN11853-NKS-3B / DIN11864-NKS-3B



| Size | A    | B     | L    | L (Long) | T   |
|------|------|-------|------|----------|-----|
| 13.5 | 13.5 | 34.0  | 23.5 | 39.5     | 1.6 |
| 17.2 | 17.2 | 34.0  | 23.5 | 39.5     | 1.6 |
| 21.3 | 21.3 | 34.0  | 23.5 | 40.5     | 1.6 |
| 26.9 | 26.9 | 50.5  | 23.5 | 40.0     | 1.6 |
| 33.7 | 33.7 | 50.5  | 25.5 | 45.5     | 2.0 |
| 42.4 | 42.4 | 64.0  | 25.5 | 45.5     | 2.0 |
| 48.3 | 48.3 | 64.0  | 26.5 | 46.5     | 2.0 |
| 60.3 | 60.3 | 91.0  | 28.5 | 58.5     | 2.0 |
| 76.1 | 76.1 | 106.0 | 30.0 | 60.0     | 2.0 |
| 88.9 | 88.9 | 119.0 | 32.5 | 62.5     | 2.3 |

### Clamp Liner ISO

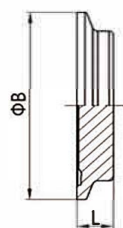
### DIN11853-BKS-3B / DIN11864-BKS-3B



| Size | A    | B     | L    | L (Long) | T   |
|------|------|-------|------|----------|-----|
| 13.5 | 13.5 | 34.0  | 22.0 | 38.0     | 1.6 |
| 17.2 | 17.2 | 34.0  | 22.0 | 38.0     | 1.6 |
| 21.3 | 21.3 | 34.0  | 22.0 | 39.0     | 1.6 |
| 26.9 | 26.9 | 50.5  | 22.0 | 39.0     | 1.6 |
| 33.7 | 33.7 | 50.5  | 24.0 | 44.0     | 2.0 |
| 42.4 | 42.4 | 64.0  | 24.0 | 44.0     | 2.0 |
| 48.3 | 48.3 | 64.0  | 25.0 | 45.0     | 2.0 |
| 60.3 | 60.3 | 91.0  | 27.0 | 57.0     | 2.0 |
| 76.1 | 76.1 | 106.0 | 28.5 | 58.5     | 2.0 |
| 88.9 | 88.9 | 119.0 | 31.0 | 61.0     | 2.3 |

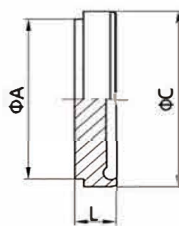
### Blank Cap

### DIN11853-BBKS-A / DIN11864-BBKS-A

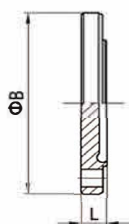


| Size | B     | L    |
|------|-------|------|
| 13.5 | 34.0  | 11.5 |
| 17.2 | 34.0  | 11.5 |
| 21.3 | 34.0  | 11.5 |
| 26.9 | 50.5  | 11.5 |
| 33.7 | 50.5  | 11.5 |
| 42.4 | 64.0  | 11.5 |
| 48.3 | 64.0  | 11.5 |
| 60.3 | 91.0  | 13.5 |
| 76.1 | 106.0 | 13.5 |
| 88.9 | 119.0 | 13.5 |

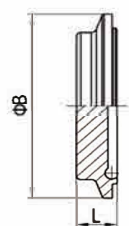



**Blank liner ISO**
**DIN11853-BBS-1B / DIN11864-BBS-1B**


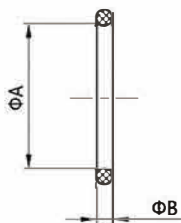
| Size | A   | C     | L  |
|------|-----|-------|----|
| 13.5 | 18  | 21.9  | 9  |
| 17.2 | 24  | 27.9  | 9  |
| 21.3 | 30  | 35.9  | 10 |
| 26.9 | 35  | 42.9  | 12 |
| 33.7 | 41  | 48.9  | 13 |
| 42.4 | 48  | 54.9  | 13 |
| 48.3 | 61  | 66.9  | 14 |
| 60.3 | 79  | 84.9  | 16 |
| 76.1 | 93  | 98.9  | 16 |
| 88.9 | 114 | 118.9 | 20 |

**Blank Nut Flange ISO**
**DIN11853-BNF-2B / DIN11864-BNF-2B**


| Size  | B   | L    |
|-------|-----|------|
| 13.5  | 54  | 11.5 |
| 17.2  | 59  | 11.5 |
| 21.3  | 62  | 11.5 |
| 26.9  | 69  | 11.5 |
| 33.7  | 74  | 11.5 |
| 42.4  | 82  | 11.5 |
| 48.3  | 88  | 11.5 |
| 60.3  | 103 | 11.5 |
| 76.1  | 125 | 13.5 |
| 88.9  | 137 | 13.5 |
| 114.3 | 168 | 15.5 |

**Blank Cap**
**DIN11853-BNKS-3B / DIN11864-BNKS-3B**


| Size | B     | L  |
|------|-------|----|
| 13.5 | 34.0  | 13 |
| 17.2 | 34.0  | 13 |
| 21.3 | 34.0  | 13 |
| 26.9 | 50.5  | 13 |
| 33.7 | 50.5  | 13 |
| 42.4 | 64.0  | 13 |
| 48.3 | 64.0  | 13 |
| 60.3 | 91.0  | 15 |
| 76.1 | 106.0 | 15 |
| 88.9 | 119.0 | 15 |

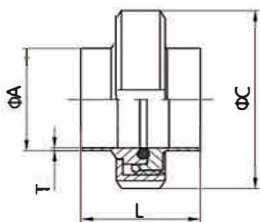
**O-Ring**
**DIN11853-R-B / DIN11864-R-B**


| Size  | A     | B   |
|-------|-------|-----|
| 13.5  | 12.0  | 3.5 |
| 17.2  | 16.0  | 3.5 |
| 21.3  | 20.0  | 3.5 |
| 26.9  | 26.0  | 3.5 |
| 33.7  | 32.0  | 5.0 |
| 42.4  | 40.5  | 5.0 |
| 48.3  | 46.5  | 5.0 |
| 60.3  | 58.5  | 5.0 |
| 76.1  | 73.5  | 5.0 |
| 88.9  | 86.5  | 5.0 |
| 114.3 | 111.0 | 5.0 |





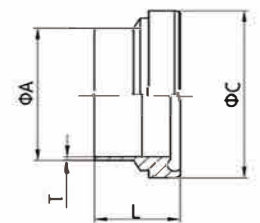
### Unions Inch



### DIN11853-V-C / DIN11864-V-C

| Size   | A     | C   | L  | L (Long) | T    |
|--------|-------|-----|----|----------|------|
| 1/2"   | 12.7  | 38  | 32 | 76       | 1.65 |
| 3/4"   | 19.05 | 44  | 32 | 76       | 1.65 |
| 1"     | 25.4  | 63  | 42 | 77       | 1.65 |
| 1 1/2" | 38.1  | 78  | 50 | 88       | 1.65 |
| 2"     | 50.8  | 92  | 54 | 89       | 1.65 |
| 2 1/2" | 63.5  | 112 | 63 | 115      | 1.65 |
| 3"     | 76.2  | 127 | 72 | 117      | 1.65 |
| 4"     | 101.6 | 148 | 86 | 119      | 2.11 |

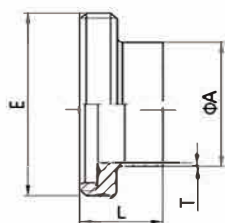
### Liner Inch



### DIN11853-BS-1C / DIN11864-BS-1C

| Size   | A     | C     | L  | L (Long) | T    |
|--------|-------|-------|----|----------|------|
| 1/2"   | 12.7  | 21.9  | 17 | 39.0     | 1.65 |
| 3/4"   | 19.05 | 27.9  | 17 | 39.0     | 1.65 |
| 1"     | 25.4  | 42.9  | 22 | 40.0     | 1.65 |
| 1 1/2" | 38.1  | 54.9  | 26 | 46.5     | 1.65 |
| 2"     | 50.8  | 66.9  | 30 | 47.5     | 1.65 |
| 2 1/2" | 63.5  | 84.9  | 34 | 63.0     | 1.65 |
| 3"     | 76.2  | 98.9  | 38 | 61.0     | 1.65 |
| 4"     | 101.6 | 118.9 | 46 | 65.0     | 2.11 |

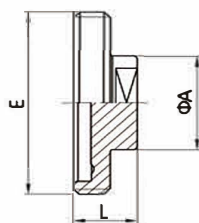
### Male ISO



### DIN11853-GS-1C / DIN11864-GS-1C

| Size   | A     | T    | L  | E          | L (Long) |
|--------|-------|------|----|------------|----------|
| 1/2"   | 12.7  | 1.65 | 19 | Rd28×1/8"  | 41.0     |
| 3/4"   | 19.05 | 1.65 | 19 | Rd34×1/8"  | 41.0     |
| 1"     | 25.4  | 1.65 | 26 | Rd52×1/6"  | 43.0     |
| 1 1/2" | 38.1  | 1.65 | 31 | Rd65×1/6"  | 48.5     |
| 2"     | 50.8  | 1.65 | 31 | Rd78×1/6"  | 48.5     |
| 2 1/2" | 63.5  | 1.65 | 36 | Rd95×1/6"  | 60.0     |
| 3"     | 76.2  | 1.65 | 42 | Rd110×1/4" | 64.0     |
| 4"     | 101.6 | 2.11 | 50 | Rd130×1/4" | 64.0     |

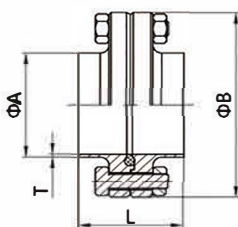
### Blank male Inch



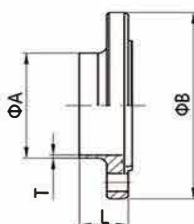
### DIN11853-BGS-1C / DIN11864-BGS-1C

| Size   | A  | E          | L  |
|--------|----|------------|----|
| 1/2"   | 22 | Rd28×1/8"  | 24 |
| 3/4"   | 22 | Rd34×1/8"  | 24 |
| 1"     | 40 | Rd52×1/6"  | 24 |
| 1 1/2" | 40 | Rd65×1/6"  | 24 |
| 2"     | 40 | Rd78×1/6"  | 28 |
| 2 1/2" | 48 | Rd95×1/6"  | 28 |
| 3"     | 48 | Rd110×1/4" | 28 |
| 4"     | 48 | Rd130×1/4" | 30 |

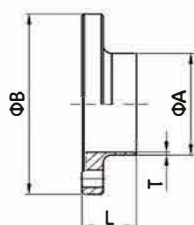



**Flange Connection Inch**
**DIN11853-F-C / DIN11864-F-C**


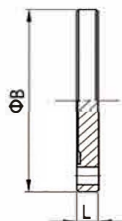
| Size   | A     | B   | L  | L (Long) | T    |
|--------|-------|-----|----|----------|------|
| 1/2"   | 12.7  | 54  | 48 | 80       | 1.65 |
| 3/4"   | 19.05 | 59  | 48 | 80       | 1.65 |
| 1"     | 25.4  | 66  | 48 | 80       | 1.65 |
| 1 1/2" | 38.1  | 79  | 48 | 90       | 1.65 |
| 2"     | 50.8  | 92  | 48 | 90       | 1.65 |
| 2 1/2" | 63.5  | 107 | 48 | 108      | 1.65 |
| 3"     | 76.2  | 125 | 48 | 112      | 1.65 |
| 4"     | 101.6 | 157 | 52 | 116      | 2.11 |

**Nut Flange Inch**
**DIN11853-NF-2C / DIN11864-NF-2C**


| Size   | A     | B   | L    | L (Long) | T    |
|--------|-------|-----|------|----------|------|
| 1/2"   | 12.7  | 54  | 25.5 | 41.5     | 1.65 |
| 3/4"   | 19.05 | 59  | 25.5 | 41.5     | 1.65 |
| 1"     | 25.4  | 66  | 25.5 | 41.5     | 1.65 |
| 1 1/2" | 38.1  | 79  | 25.5 | 46.5     | 1.65 |
| 2"     | 50.8  | 92  | 25.5 | 46.5     | 1.65 |
| 2 1/2" | 63.5  | 107 | 25.5 | 55.5     | 1.65 |
| 3"     | 76.2  | 125 | 25.5 | 57.5     | 1.65 |
| 4"     | 101.6 | 157 | 27.5 | 59.5     | 2.11 |

**Liner Flange Inch**
**DIN11853-BF-2C / DIN11864-BF-2C**


| Size   | A     | B   | L  | L (Long) | T    |
|--------|-------|-----|----|----------|------|
| 1/2"   | 12.7  | 54  | 24 | 40       | 1.65 |
| 3/4"   | 19.05 | 59  | 24 | 40       | 1.65 |
| 1"     | 25.4  | 66  | 24 | 40       | 1.65 |
| 1 1/2" | 38.1  | 79  | 24 | 45       | 1.65 |
| 2"     | 50.8  | 92  | 24 | 45       | 1.65 |
| 2 1/2" | 63.5  | 107 | 24 | 54       | 1.65 |
| 3"     | 76.2  | 125 | 24 | 56       | 1.65 |
| 4"     | 101.6 | 157 | 26 | 58       | 2.11 |

**Blank Liner Flange Inch**
**DIN11853-BBF-2C / DIN11864-BBF-2C**


| Size   | B   | L  |
|--------|-----|----|
| 1/2"   | 54  | 10 |
| 3/4"   | 59  | 10 |
| 1"     | 66  | 10 |
| 1 1/2" | 79  | 10 |
| 2"     | 92  | 10 |
| 2 1/2" | 107 | 10 |
| 3"     | 125 | 12 |
| 4"     | 157 | 14 |





### Clamp Connection Inch

### DIN11853-K-C / DIN11864-K-C

| Size   | A     | L  | L (Long) | T    |
|--------|-------|----|----------|------|
| 1/2"   | 12.7  | 44 | 76       | 1.65 |
| 3/4"   | 19.05 | 44 | 76       | 1.65 |
| 1"     | 25.4  | 44 | 77       | 1.65 |
| 1 1/2" | 38.1  | 48 | 88       | 1.65 |
| 2"     | 50.8  | 49 | 89       | 1.65 |
| 2 1/2" | 63.5  | 55 | 115      | 1.65 |
| 3"     | 76.2  | 57 | 117      | 1.65 |
| 4"     | 101.6 | 59 | 119      | 2.11 |

### Clamp Nut Inch

### DIN11853-NKS-3C / DIN11864-NKS-3C

| Size   | A     | B     | L    | L (Long) | T    |
|--------|-------|-------|------|----------|------|
| 1/2"   | 12.7  | 34.0  | 23.5 | 39.5     | 1.65 |
| 3/4"   | 19.05 | 34.0  | 23.5 | 39.5     | 1.65 |
| 1"     | 25.4  | 50.5  | 23.5 | 40.0     | 1.65 |
| 1 1/2" | 38.1  | 64.0  | 25.5 | 45.5     | 1.65 |
| 2"     | 50.8  | 77.5  | 26.0 | 46.0     | 1.65 |
| 2 1/2" | 63.5  | 91.0  | 29.0 | 59.0     | 1.65 |
| 3"     | 76.2  | 106.0 | 30.0 | 60.0     | 1.65 |
| 4"     | 101.6 | 130.0 | 31.0 | 61.0     | 2.11 |

### Clamp Liner Inch

### DIN11853-BKS-3C / DIN11864-BKS-3C

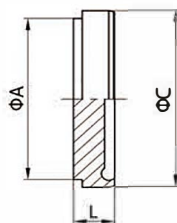
| Size   | A     | B     | L    | L (Long) | T    |
|--------|-------|-------|------|----------|------|
| 1/2"   | 12.7  | 34.0  | 22.0 | 38.0     | 1.65 |
| 3/4"   | 19.05 | 34.0  | 22.0 | 38.0     | 1.65 |
| 1"     | 25.4  | 50.5  | 22.0 | 38.5     | 1.65 |
| 1 1/2" | 38.1  | 64.0  | 24.0 | 44.0     | 1.65 |
| 2"     | 50.8  | 77.5  | 24.5 | 44.5     | 1.65 |
| 2 1/2" | 63.5  | 91.0  | 27.5 | 57.5     | 1.65 |
| 3"     | 76.2  | 106.0 | 28.5 | 58.5     | 1.65 |
| 4"     | 101.6 | 130.0 | 29.5 | 59.5     | 2.11 |

### Blank Cap

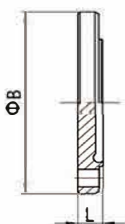
### DIN11853-BBKS-3C / DIN11864-BBKS-3C

| Size   | B     | L    |
|--------|-------|------|
| 1/2"   | 34.0  | 11.5 |
| 3/4"   | 34.0  | 11.5 |
| 1"     | 50.5  | 11.5 |
| 1 1/2" | 64.0  | 11.5 |
| 2"     | 77.5  | 13.5 |
| 2 1/2" | 91.0  | 13.5 |
| 3"     | 106.0 | 13.5 |
| 4"     | 130.0 | 13.5 |

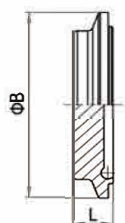



**Blank liner Inch**
**DIN11853-BBS-1C / DIN11864-BBS-1C**


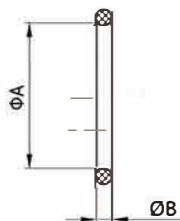
| Size   | A   | C     | L  |
|--------|-----|-------|----|
| 1/2"   | 18  | 21.9  | 9  |
| 3/4"   | 24  | 27.9  | 9  |
| 1"     | 35  | 42.9  | 12 |
| 1 1/2" | 48  | 54.9  | 13 |
| 2"     | 61  | 66.9  | 14 |
| 2 1/2" | 79  | 84.9  | 16 |
| 3"     | 93  | 98.9  | 16 |
| 4"     | 114 | 118.9 | 20 |

**Blank Nut Flange Inch**
**DIN11853-BNF-2C / DIN11864-BNF-2C**


| Size   | B   | L    |
|--------|-----|------|
| 1/2"   | 54  | 11.5 |
| 3/4"   | 59  | 11.5 |
| 1"     | 66  | 11.5 |
| 1 1/2" | 79  | 11.5 |
| 2"     | 92  | 11.5 |
| 2 1/2" | 107 | 11.5 |
| 3"     | 125 | 13.5 |
| 4"     | 157 | 15.5 |

**Blank Cap**
**DIN11853-BNKS-3C / DIN11864-BNKS-3C**


| Size   | B     | L  |
|--------|-------|----|
| 1/2"   | 34.0  | 13 |
| 3/4"   | 34.0  | 13 |
| 1"     | 50.5  | 13 |
| 1 1/2" | 64.0  | 13 |
| 2"     | 77.5  | 15 |
| 2 1/2" | 91.0  | 15 |
| 3"     | 106.0 | 15 |
| 4"     | 130.0 | 15 |

**O-Ring**
**DIN11853-R-C / DIN11864-R-C**


| Size   | A   | B   |
|--------|-----|-----|
| 1/2"   | 12  | 3.5 |
| 3/4"   | 18  | 3.5 |
| 1"     | 24  | 3.5 |
| 1 1/2" | 37  | 5.0 |
| 2"     | 50  | 5.0 |
| 2 1/2" | 62  | 5.0 |
| 3"     | 75  | 5.0 |
| 4"     | 100 | 5.0 |

